



Rapid Driver Developer (RaDD)

Build your own drivers for Identity Manager—with RaDD

If you use Designer for Novell® Identity Manager, the graphical user interface that streamlines configuration and deployment of Identity Manager solutions, then you have the ability to create your own drivers with Rapid Driver Developer (RaDD).

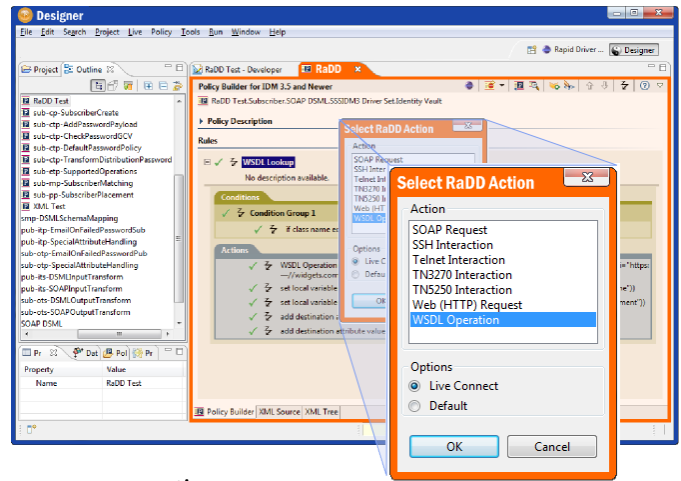
RaDD is a plug-in for Designer that allows non-programmers to generate a driver that connects Identity Manager to an external application. The RaDD interface is integrated so that users of Designer will feel right at home creating their own custom solutions.

RaDD has built-in support for SOAP, WSDL, HTTP, telnet, TN3270 and ssh

Any application that communicates via these standards can connect with Identity Manager using a custom RaDD driver.

RaDD is well-suited for customers who have applications too unique or specialized to warrant existing driver availability.

RaDD generates extended DirXMLScript



actions, so users familiar with DirXMLScript policies will easily recognize the generated functionality.

A deployed driver can execute RaDD actions directly from a policy, or have the driver shim execute the actions in an event handler.

Fine-tune your driver's performance with design-time testing

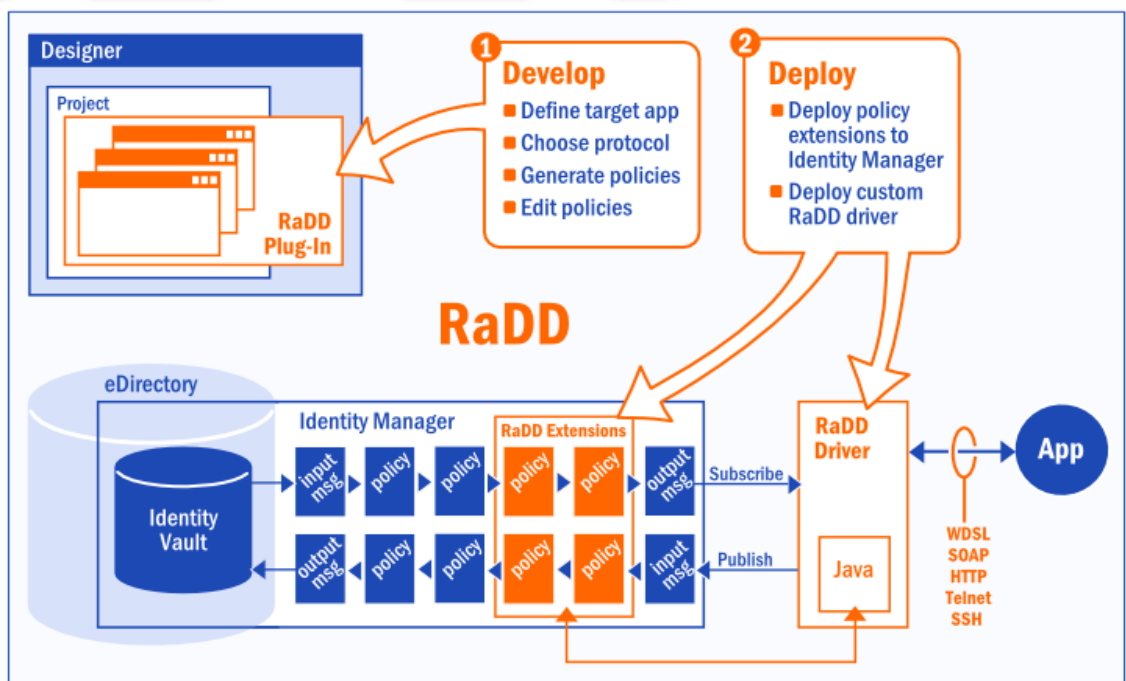
A key feature of RaDD is its ability to connect to the target application at design time, allowing you to preview the results of your driver actions before deployment.

RaDD presents work flow and collects data inputs through a system of easy-to-use templates, forms and wizards.

RaDD is currently under development. Upcoming product release is expected by fourth quarter 2010.

Contact us today

sales@omnibond.com
support@omnibond.com
P.O. Box 793
Pendleton, SC 29670
www.omnibond.com



Engineering
Trust
Identity