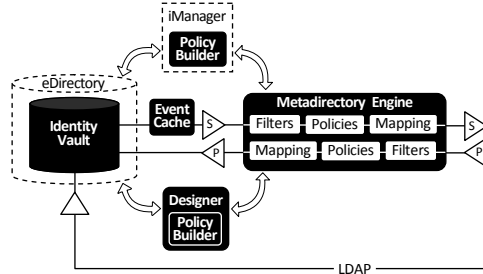


Novell® Identity Manager

A short course on key components and data flow



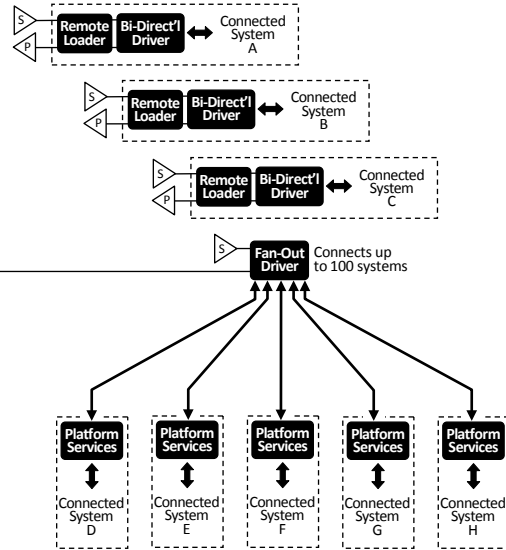
What is Identity Manager?

- A comprehensive software suite that allows organizations to manage the full user life-cycle, from initial hire, through ongoing changes, to ultimate retirement of the user relationship.
- A data-sharing and synchronization service that enables applications, directories, and databases to share information.
- An integrator of scattered digital identities across systems and organizational boundaries that enables you to establish policies governing automatic updates to designated systems when changes occur
- A foundation for account provisioning, security, user self-service, authentication, authorization, automated workflow and Web services



Glossary

- Bi-Directional Driver** Enables translation of identity and security events into commands between a connected system and Identity Manager through both the Subscriber and Publisher channels.
- Channel** Path of connections through which events are processed into commands.
- Connected System** An application, directory, database or file on one of several supported operating system platforms across a network. Each connected system requires a driver to connect to Identity Manager.
- Designer** Application for planning, designing, and exporting enterprise identity management configurations. Includes Policy Builder.
- Driver Interface** Exchange of data between a connected system and an Identity Manager driver through the use of a common scripting program. Depending on the connected system, the scripts access information through event systems, change logs or system queries.
- eDirectory™** Directory services database by Novell that represents and controls every user, group and device in a network through a hierarchy tree of objects and attributes. Designed to the X.500 standard for directory services and therefore supports LDAP communication protocol.
- Event Cache** Stores all events generated through eDirectory until they are successfully processed. This guarantees that no data is lost from a bad connection, loss of system resources, unavailability of a driver, or any other network failure.
- Events** Communications about, or changes to, user and group objects in the Identity Vault or a connected system. Supported by eDirectory and LDAP, event types include add, modify, rename, move, delete, change password, and query.



- Fan-Out (core) Driver** Enables translation of identity and security events into commands between a connected system and Identity Manager through the Subscriber channel. Manages provisioning and authentication services to each connected system that runs Platform Services. Since it only receives event messages on the Subscriber channel, the Fan-Out driver does not utilize policies in the Metadirectory Engine. Returns data to Identity Vault via LDAP. A single core driver can support many platforms running Platform Services, regardless of platform operating system.
- Filters** Rules in XML for routing events through appropriate policies.
- Human Interface** Connection to Identity Manager components for administrator/user manipulation.
- Identity Vault** A separate object tree in eDirectory that reflects all users, groups, and Identity Manager components.
- iManager™** Application for administering eDirectory. Supports an Identity Manager plug-in for Policy Builder.
- LDAP** (Lightweight Directory Access Protocol) A standard network protocol for communicating with a directory services tree that conforms to the X.500 database standard.
- Mapping** Reconciles data between schemas used by eDirectory and those of each connected system.
- Metadirectory Engine** The key component in Identity Manager, providing the XML interface that allows drivers to synchronize information with the Identity Vault. Applies filters, policies and rules for mapping similar objects and attributes between eDirectory and connected systems.
- Platform Services** The Fan-Out driver component that resides on a connected system to interface with the Core Driver component.

- Policies** Rules in XML for transforming events entering a channel into one or more commands exiting that channel.
- Policy Builder** A complete, graphical interface for creating and managing the XML policies that define the exchange of data between the Identity Vault and connected systems. Policy Builder is included in Designer. It is also added as a plug-in to iManager during Identity Manager installation.
- Publisher Channel** Path for events originating in a connected system.
- Remote Loader** A component used to link communications between Identity Manager and one of its drivers when the driver resides on a separate (remote) system from that of the Metadirectory Engine.
- SSL** (Secure Sockets Layer) A standard network protocol for secure data exchange. Identity Manager uses SSL connections for its channel processing to remote systems.
- Subscriber Channel** Path for events originating in the Identity Vault.
- X.500** Standard specification for an object-oriented tree-styled database common among directory services products such as eDirectory.
- XML** Standard for exchanging data via text-based messages or documents. Employs mark-up tags to richly define and granulate different types of data. Identity Manager processes all events as XML documents, applying its filters, policies, and schema maps as XML transformations.